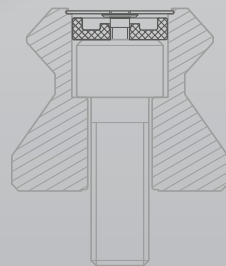


Rolling bearings  
Plain bearings  
**Linear technology**

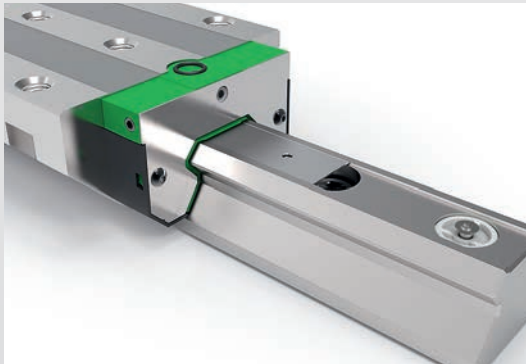
# Cover Strip for Monorail Guidance Systems



**SCHAEFFLER**

## Mounting in just a tenth of the time

The new ADE steel cover strip can be mounted up to 90% more quickly than conventional solutions. The mounting process is appealingly easy – the cover strip is simply slotted into the guide rail's integrated groove without the need for any special tools. It is then fixed firmly in place using a screw at the end of the guide rail. The innovative strip fixing method allows the entire length of the guide rail to be utilized. This design allows the strip to be mounted or replaced even when the guide carriage is installed, which makes it an ideal maintenance solution.



What is more, the new cover strip is also extremely robust, suitable for difficult operating conditions, and guaranteed to be reusable.

We currently offer the new ADE cover strip for RUE 35, 45, and 55 linear recirculating roller bearing and guideway assemblies.

### Customer benefits

- Mounting and replacement can be carried out even with the guide carriage installed
- The mounting process is very simple and up to 90% faster, and requires no special tools
- The innovative strip fixing method allows the entire length of the guide rail to be utilized

### Technical features

- Customized in length
- Guidance system and strip in a single package
- Longer strips available in coils (for multi-piece guideways)
- Robust and reusable steel strip